

NEW



**EVO**  
the Power Line

The category leap

**etelec**<sup>®</sup>  
electrical technology

The new series of **IP68 gel insulated joints and connecting devices**.

A whole innovative product, an idea that transforms a consolidated concept into an **absolute novelty**, which has the advantage of ensuring **safety, performance, speed** and **ease of use**. Seven sizes and nine versions, all equipped with spring clamp or screw type terminal blocks..

## Straight connection

CONNECTING DEVICES



EVO PX



EVO 01

JOINTS



EVO 02



EVO 03



EVO 04



EVO 05

## Branch connection

CONNECTING DEVICES



EVO 01D



JOINTS



EVO 02D



EVO 03D



# The new EVO range

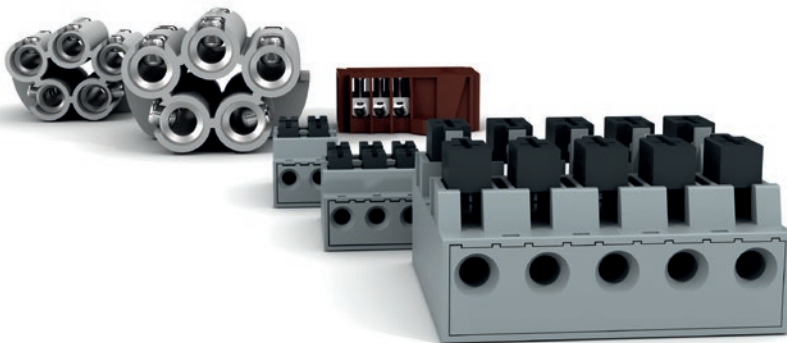
Nine models to enhance the characteristics of simplicity and reliability, with one eye on the experiences of the past and one towards the innovations of a completely new future.

EVO, the new Etelec range to satisfy every need.



# To each their own

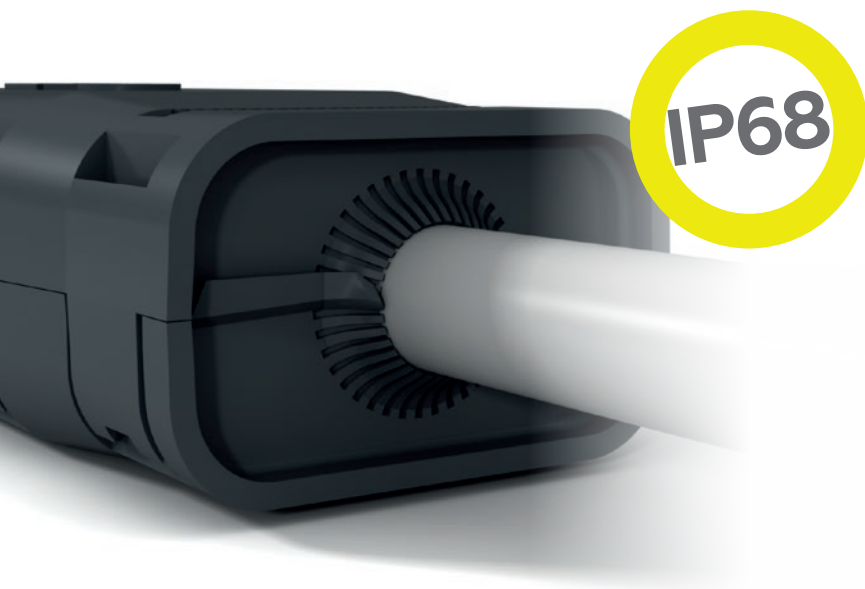
Six straight and three branched models, for connections with screw and spring terminal blocks, **certified by Bureau Veritas**, for an **easier and faster installation**



# Eco logical

**100% recyclable cardboard boxes and blisters, made of PLA, the plant-based "non-plastic plastic", for a plastic-free packaging**, which projects us towards a future that is already present.

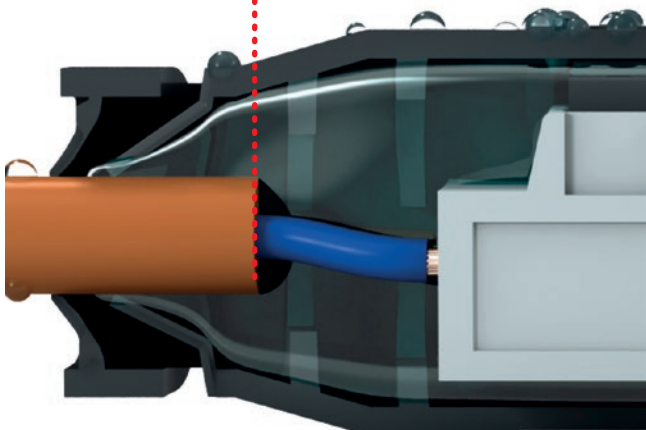




# Maximum protection

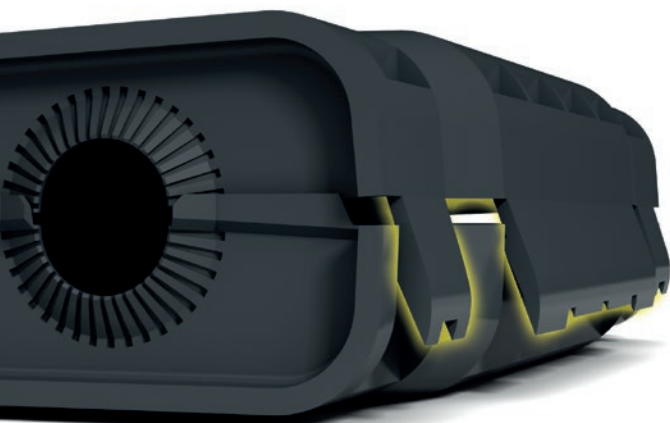
The new and **patented flexible** cable housing seats adapt to the different cable diameters for which each device is designed and, in **combination with the gel insulation characteristics**, made it possible to certify the **IP68** degree of **protection** (in compliance with the EN 60529 standard) in an independent laboratory, that is to say maximum protection against water and dust **without the use of cable glands** or additional components to be pre-threaded on the cables...

**NO** CONDENSATION IP68



# NO condensation

... the gel also prevents moisture from rising through the cables due to capillary action and the formation of condensation inside the equipment.



# Warranty seal



**New snap-closing system**, which **prevents the reopening of the shell**, without the use of a tool, avoiding the need for cable ties or other similar systems.



# The connecting devices

The gel-insulated connecting devices of the EVO range (**EVO PX**, **EVO 01**, **EVO 01D**) allow to make straight and branch connections on the types and sections of cable most commonly used in installations and electrical wiring, up to  $3 \times 2.5 \text{ mm}^2$

*EVO 01D model can be wall fixed*

## Dedicate solutions

**Specifically designed for small cables applications,** the EVO devices can be used for:

- road and carriageway signs
- gardens, fountains, ground lighting of passages
- residential and ambient indoor lighting
- LED lighting systems
- video surveillance systems,
- industrial and domestic automation (barriers, gates)
- telephone and telecommunications systems
- loose cables on false ceilings or outdoors (to replace the junction boxes)



EVO PX  
as **small**  
as a **pixel**

The **smallest connecting device in the range**. The dedicated solution conceived and designed for **small-section cables** and for **tight** installation spaces. **EVO PX**: only **68 mm** long and **24 mm** diameter, as small as a pixel!

# The joints

The gel-insulated joints of the EVO range (**EVO 02, EVO 03, EVO 04, EVO 05, EVO 02D, EVO 03D**) allow to make straight and branch joints with **IP68 degree of protection** on a wide range of power cables, up to 5 × 16 mm<sup>2</sup> for straight and up to 3 × 4 mm<sup>2</sup> for branch connections.

EVO joints combine a renewed design with ergonomic lines, with the characteristics that always distinguished the technology of Etelec pre-filled gel joints, such as simplicity and speed of installation, reliability over time and respect for the environment.

*EVO 02D and EVO 03D can be wall fixed*

## New spring terminal blocks















The traditional and tested screw-type terminal blocks are joined by the **new spring-clamp terminal blocks**, for a tool free **easier and faster installation**. The **removable push button plate** of EVO 02 allows easy pressing of the three buttons allowing to insert all three **conductors of the cable at the same time**.

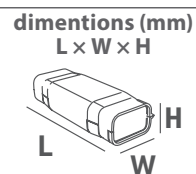
The five-cores spring terminal block of EVO 04 is equipped with a new patented **lock-unlock button system**, which allows you to easily connect the five cores of the cable at the same time.

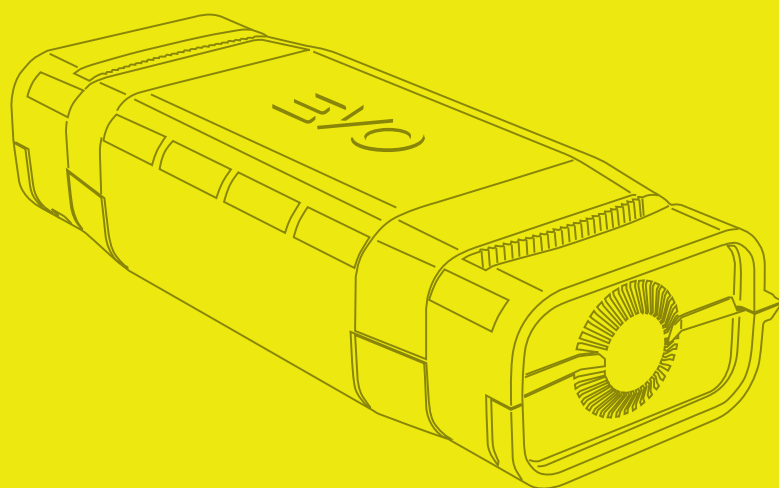
The spring and screw terminal blocks of the EVO joints **comply with Directive 2014/35/EU (LVD)** according to the EN 60998 Standard, with Bureau Veritas certification.



# ... all EVO range

cores	ref	item	cross section (mm <sup>2</sup> )	cable diameter (mm)	voltage	included connector	dimensions (mm)	video tutorial	
							L × W × H		
<b>Straight</b>									
	<b>EV100</b>	EVO PX	0,5 – 1,5	4,5 – 6,5	450 V 24 A	two cores spring terminal block	68 × 24 × 22		
	<b>EV101</b>	EVO 01	0,75 – 2,5	6 – 8	450 V 24 A	three cores screw terminal block	72 × 28 × 24		
	<b>EV102</b>	EVO 02	1,5 – 2,5	10 – 13	0,6/1 kV	three cores spring terminal block	80 × 35 × 28		
	<b>EV103</b>	EVO 03	1,5 – 6	13 – 17	0,6/1 kV	five cores screw terminal block	145 × 56 × 35		
	<b>EV104</b>	EVO 04	2,5 – 6	14 – 22	0,6/1 kV	five cores spring terminal block	183 × 70 × 42		
	<b>EV105</b>	EVO 05	4 – 16	14 – 22	0,6/1 kV	five cores screw terminal block	183 × 70 × 42		
<b>Branch</b>									
	<b>EV201D</b>	EVO 01D	p. d.	1 – 2,5	6 – 8	450 V 24 A	three cores screw terminal block	73 × 73 × 23	
	<b>EV202D</b>	EVO 02D	p. d.	1,5 – 4	10 – 13	0,6/1 kV	three cores screw terminal block	105 × 90 × 28	
	<b>EV203D</b>	EVO 03D	p. d.	1,5 – 4	10 – 13	0,6/1 kV	three cores screw terminal block	105 × 90 × 28	





**EVO**  
the Power Line



[etelec.com](http://etelec.com)

**Etelec Italia S.p.A.**  
Via D. de Roberto, 40  
NA 80143 - Italia